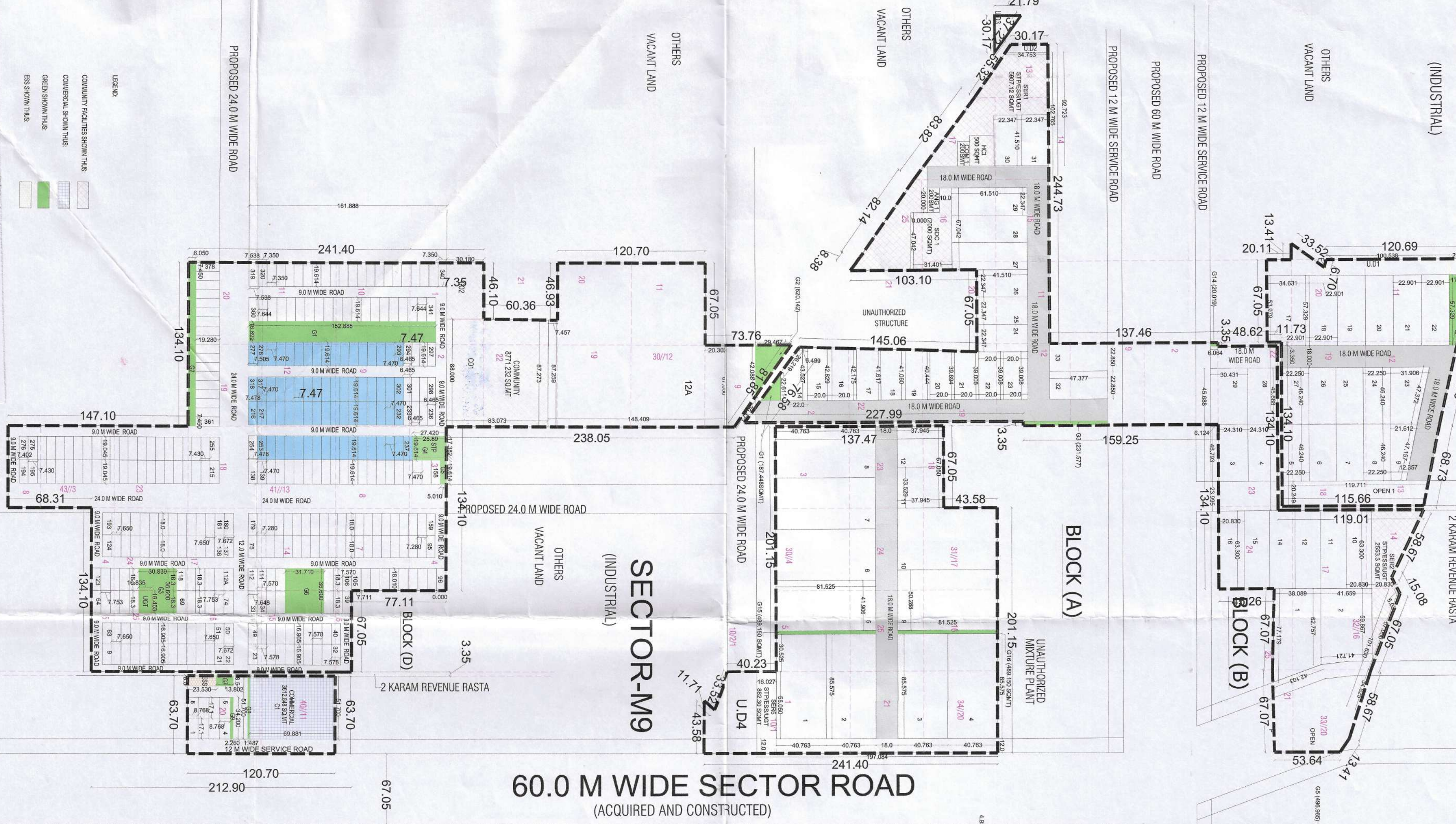
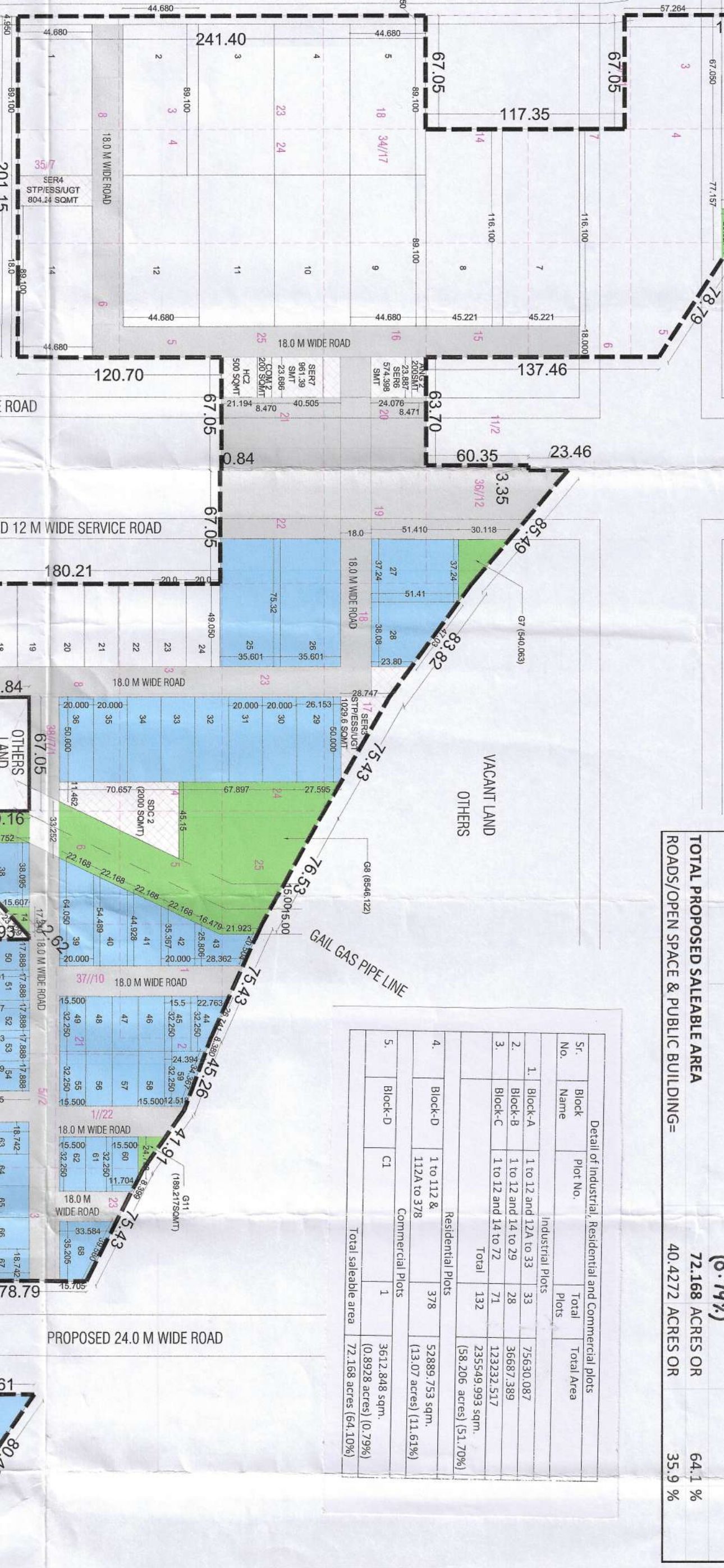


SECTOR-M10 (INDUSTRIAL)



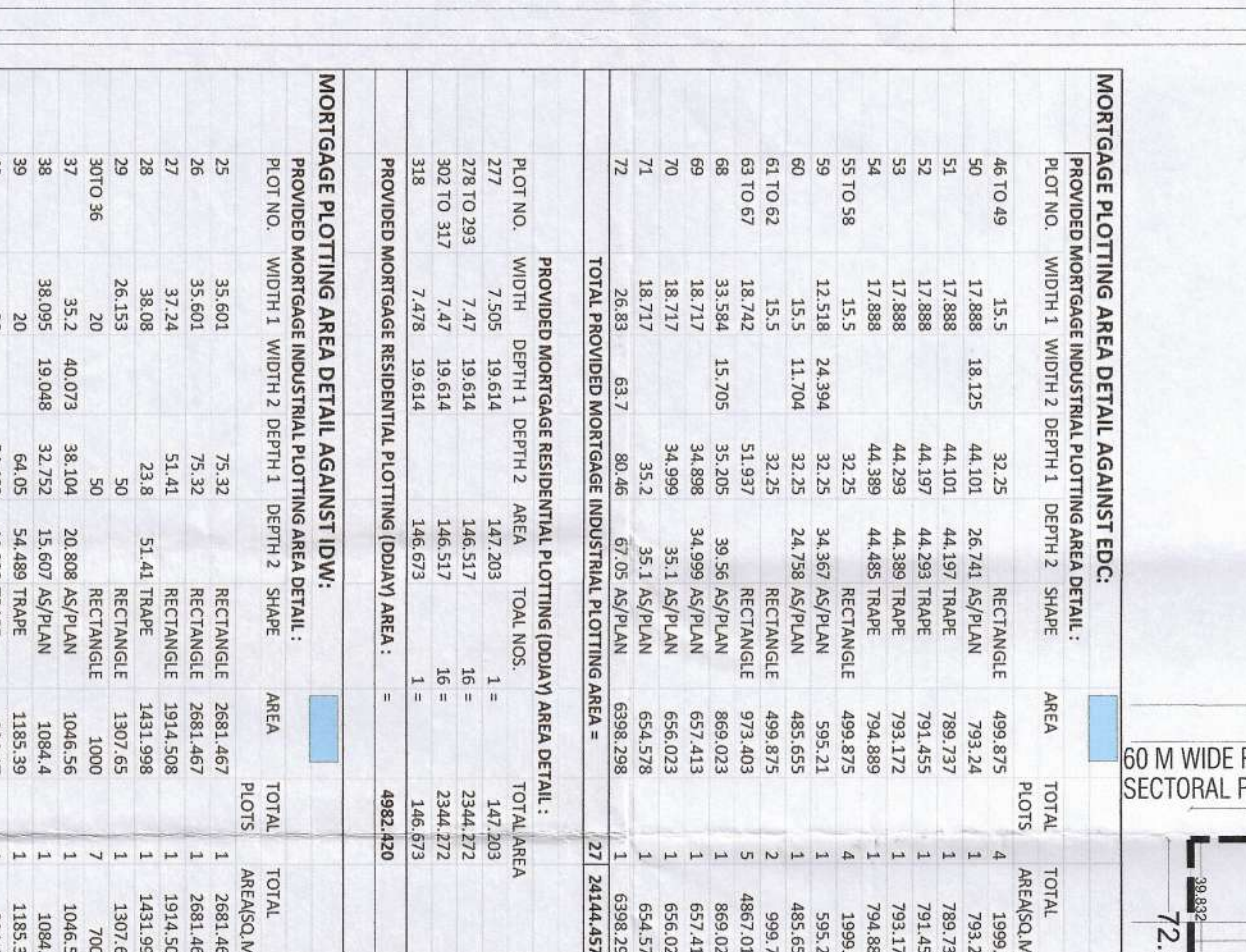
SALEABLE AREA - GROSS AREA	13.07 ACRES	317.555 PPA
1 DENSITY (@ 18 PERSONS)	1.659 ACRES	(690.751 SQ.MTRS)
2 PERMISSIBLE-1.607 ACRES	1.248 ACRES	(687.525 SQ.MTRS)
3 PERMISSIBLE-2.1428 ACRES (10%)		

SECTOR-M13 (INDUSTRIAL)



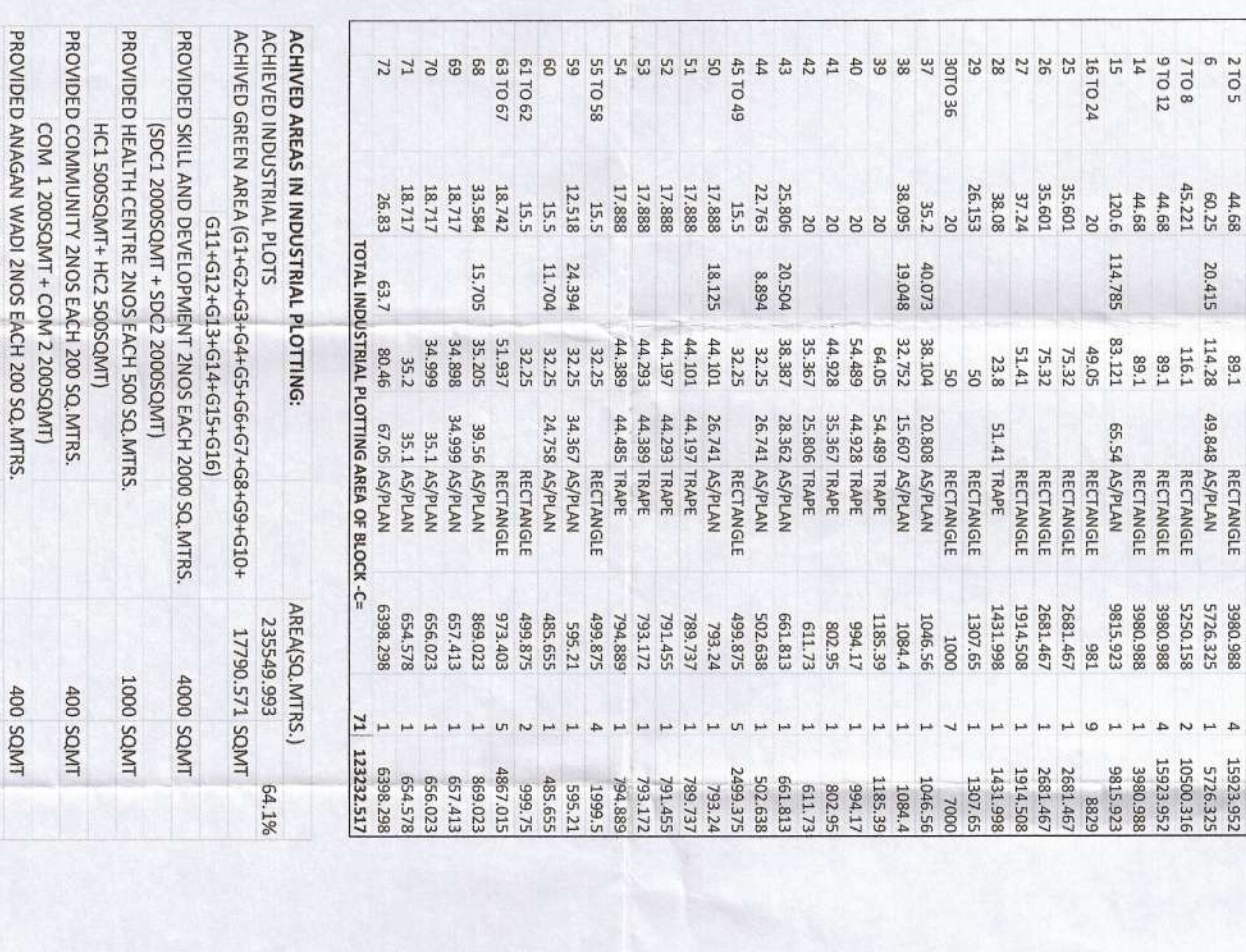
SALEABLE AREA - GROSS AREA	13.07 ACRES	317.555 PPA
1 DENSITY (@ 18 PERSONS)	1.659 ACRES	(690.751 SQ.MTRS)
2 PERMISSIBLE-1.607 ACRES	1.248 ACRES	(687.525 SQ.MTRS)
3 PERMISSIBLE-2.1428 ACRES (10%)		

60.0 M WIDE SECTOR ROAD (ACQUIRED AND CONSTRUCTED)



SALEABLE AREA - GROSS AREA	13.07 ACRES	317.555 PPA
1 DENSITY (@ 18 PERSONS)	1.659 ACRES	(690.751 SQ.MTRS)
2 PERMISSIBLE-1.607 ACRES	1.248 ACRES	(687.525 SQ.MTRS)
3 PERMISSIBLE-2.1428 ACRES (10%)		

SECTOR-M14 (INDUSTRIAL)



SALEABLE AREA - GROSS AREA	13.07 ACRES	317.555 PPA
1 DENSITY (@ 18 PERSONS)	1.659 ACRES	(690.751 SQ.MTRS)
2 PERMISSIBLE-1.607 ACRES	1.248 ACRES	(687.525 SQ.MTRS)
3 PERMISSIBLE-2.1428 ACRES (10%)		

S.No.	Land Use	Permissible
1	Roads, Infrastructure Services, Open Spaces <td>35%</td>	35%
2	For Colony area more than 200 acres	65%
3	Industrial (25% minimum) residential and commercial component will not be more than 5%	12.00%

SALEABLE AREA - GROSS AREA	13.07 ACRES	317.555 PPA
1 DENSITY (@ 18 PERSONS)	1.659 ACRES	(690.751 SQ.MTRS)
2 PERMISSIBLE-1.607 ACRES	1.248 ACRES	(687.525 SQ.MTRS)
3 PERMISSIBLE-2.1428 ACRES (10%)		

SALEABLE AREA - GROSS AREA	13.07 ACRES	317.555 PPA
1 DENSITY (@ 18 PERSONS)	1.659 ACRES	(690.751 SQ.MTRS)
2 PERMISSIBLE-1.607 ACRES	1.248 ACRES	(687.525 SQ.MTRS)
3 PERMISSIBLE-2.1428 ACRES (10%)		

SALEABLE AREA - GROSS AREA	13.07 ACRES	317.555 PPA
1 DENSITY (@ 18 PERSONS)	1.659 ACRES	(690.751 SQ.MTRS)
2 PERMISSIBLE-1.607 ACRES	1.248 ACRES	(687.525 SQ.MTRS)
3 PERMISSIBLE-2.1428 ACRES (10%)		

SALEABLE AREA - GROSS AREA	13.07 ACRES	317.555 PPA
1 DENSITY (@ 18 PERSONS)	1.659 ACRES	(690.751 SQ.MTRS)
2 PERMISSIBLE-1.607 ACRES	1.248 ACRES	(687.525 SQ.MTRS)
3 PERMISSIBLE-2.1428 ACRES (10%)		

SALEABLE AREA - GROSS AREA	13.07 ACRES	317.555 PPA
1 DENSITY (@ 18 PERSONS)	1.659 ACRES	(690.751 SQ.MTRS)
2 PERMISSIBLE-1.607 ACRES	1.248 ACRES	(687.525 SQ.MTRS)
3 PERMISSIBLE-2.1428 ACRES (10%)		

DRIVING TITLE:
 PROPOSED LAYOUT PLAN FOR INDUSTRIAL PLOTTED COLONY ON LAND AREA MEASURING 116-15 ACRES FALLING IN SECTORS-M9 M10, M13 AND M14 OF REVENUE ESTATE OF VILLAGE BANS HARI AND BANS KUSHA TEHSIL HARSURU DISTRICT GURGRAM, HARYANA BEING DEVELOPED BY M/S WORLDWIDE RESORTS AND ENTERTAINMENT PVT. LTD.

TO be read with License No. 136 of 2022 Dated 28/04/2022
 This layout plan for 116.15 acres, (Drawing No. DTPC-8664 dated 09-09-2021) comprised of Industrial, Residential and Commercial plots, being developed by Worldwide Resorts and Entertainment Pvt. Ltd., Sector-M9, M10, M13 & M14 of Haryana District Gurgram hereby approved subject to the following conditions:-

- The layout plan shall be read in conjunction with the clauses appearing on the agreement executed under Rule 11 and 12 of all the Residential and Commercial and Community sites.
- The demarcation plans as per site of all the Residential and Commercial and Community sites shall be approved from the Department and construction on these sites shall be governed by the approved demarcation plans.
- The portion of the sector/development roads/green belts as provided in the Development Plan for the layout, which form part of the layout area shall be transferred free of cost to the government.
- That you will have no objection to the regularization of the boundaries of the layout through integration of services. The decision of the competent authority shall be binding in this regard.
- 15.33 (E) Dated 14.9.2020.
- That the rain water harvesting system shall be provided as per Central Ground Water Authority norms/Haryana Govt. notification as applicable.
- That the collector/owner shall ensure the installation of Solar Photovoltaic Power Plant as per the Renewable Energy Department.
- 19/6/2016-5P order 31.03.2016 issued by Haryana Government Renewable Energy Department for Government of the Energy Conservation Building Codes.
- That the collector/owner shall use only Compact Fluorescent Lamps fitting for internal lighting as well as campus lighting.
- That the collector/owner shall ensure the installation of Solar Photovoltaic Power Plant as per the Renewable Energy Department.
- 19/6/2016-5P order 31.03.2016 issued by Haryana Government Renewable Energy Department for Government of the Energy Conservation Building Codes.
- That the collector/owner shall ensure the installation of Solar Photovoltaic Power Plant as per the Renewable Energy Department.
- 19/6/2016-5P order 31.03.2016 issued by Haryana Government Renewable Energy Department for Government of the Energy Conservation Building Codes.
- That the collector/owner shall ensure the installation of Solar Photovoltaic Power Plant as per the Renewable Energy Department.
- 19/6/2016-5P order 31.03.2016 issued by Haryana Government Renewable Energy Department for Government of the Energy Conservation Building Codes.

DETAIL OF INDUSTRIAL PLOTS

Sr.	Block	Part No.	Total Area
1	Block-A	1.10.12 and 1.10.22	256,801.87
2	Block-B	1.10.12 and 1.10.22	23,232.517
3	Block-C	1.10.12 and 1.10.22	1,23,232.517
		Total	5,12,266.904
		Total (Residential Plots)	5,12,266.904
		Total (Commercial Plots)	13,070.096
		Total (Industrial Plots)	5,25,337.000

DETAIL OF INDUSTRIAL PLOTS

Sr.	Block	Part No.	Total Area
1	Block-A	1.10.12 and 1.10.22	256,801.87
2	Block-B	1.10.12 and 1.10.22	23,232.517
3	Block-C	1.10.12 and 1.10.22	1,23,232.517
		Total	5,12,266.904
		Total (Residential Plots)	5,12,266.904
		Total (Commercial Plots)	13,070.096
		Total (Industrial Plots)	5,25,337.000

DETAIL OF INDUSTRIAL PLOTS

Sr.	Block	Part No.	Total Area
1	Block-A	1.10.12 and 1.10.22	256,801.87
2	Block-B	1.10.12 and 1.10.22	23,232.517
3	Block-C	1.10.12 and 1.10.22	1,23,232.517
		Total	5,12,266.904
		Total (Residential Plots)	5,12,266.904
		Total (Commercial Plots)	13,070.096
		Total (Industrial Plots)	5,25,337.000

DETAIL OF INDUSTRIAL PLOTS

Sr.	Block	Part No.	Total Area
1	Block-A	1.10.12 and 1.10.22	256,801.87
2	Block-B	1.10.12 and 1.10.22	23,232.517
3	Block-C	1.10.12 and 1.10.22	1,23,232.517
		Total	5,12,266.904
		Total (Residential Plots)	5,12,266.904
		Total (Commercial Plots)	13,070.096
		Total (Industrial Plots)	5,25,337.000

DETAIL OF INDUSTRIAL PLOTS

Sr.	Block	Part No.	Total Area
1	Block-A	1.10.12 and 1.10.22	256,801.87
2	Block-B	1.10.12 and 1.10.22	23,232.517
3	Block-C	1.10.12 and 1.10.22	1,23,232.517
		Total	5,12,266.904
		Total (Residential Plots)	5,12,266.904
		Total (Commercial Plots)	13,070.096
		Total (Industrial Plots)	5,25,337.000

DETAIL OF INDUSTRIAL PLOTS

Sr.	Block	Part No.	Total Area
1	Block-A	1.10.12 and 1.10.22	256,801.87
2	Block-B	1.10.12 and 1.10.22	23,232.517
3	Block-C	1.10.12 and 1.10.22	1,23,232.517
		Total	5,12,266.904
		Total (Residential Plots)	5,12,266.904
		Total (Commercial Plots)	13,070.096
		Total (Industrial Plots)	5,25,337.000

DETAIL OF INDUSTRIAL PLOTS

Sr.	Block	Part No.	Total Area
1	Block-A	1.10.12 and 1.10.22	256,801.87
2	Block-B	1.10.12 and 1.10.22	23,232.517
3	Block-C	1.10.12 and 1.10.22	1,23,232.517
		Total	5,12,266.904
		Total (Residential Plots)	5,12,266.904
		Total (Commercial Plots)	13,070.096
		Total (Industrial Plots)	5,25,337.000

DETAIL OF INDUSTRIAL PLOTS

Sr.	Block	Part No.	Total Area
1	Block-A	1.10.12 and 1.10.22	256,801.87
2	Block-B	1.10.12 and 1.10.22	23,232.517
3	Block-C	1.10.12 and 1.10.22	1,23,232.517
		Total	5,12,266.904
		Total (Residential Plots)	5,12,266.904
		Total (Commercial Plots)	13,070.096
		Total (Industrial Plots)	5,25,337.000

DETAIL OF INDUSTRIAL PLOTS

Sr.	Block	Part No.	Total Area
1	Block-A	1.10.12 and 1.10.22	256,801.87
2	Block-B	1.10.12 and 1.10.22	23,232.517
3	Block-C	1.10.12 and 1.10.22	1,23,232.517
		Total	5,12,266.904
		Total (Residential Plots)	5,12,266.904
		Total (Commercial Plots)	13,070.096
		Total (Industrial Plots)	5,25,337.000

DETAIL OF INDUSTRIAL PLOTS

Sr.	Block	Part No.	Total Area
1	Block-A	1.10.12 and 1.10.22	256,801.87
2	Block-B	1.10.12 and 1.10.22	23,232.517
3	Block-C	1.10.12 and 1.10.22	1,23,232.517
		Total	5,12,266.904
		Total (Residential Plots)	5,12,266.904
		Total (Commercial Plots)	13,070.096
		Total (Industrial Plots)	5,25,337.000

DETAIL OF INDUSTRIAL PLOTS

Sr.	Block	Part No.	Total Area
1	Block-A	1.10.12 and 1.10.22	256,801.87
2	Block-B	1.10.12 and 1.10.22	23,232.517
3	Block-C	1.10.12 and 1.10.22	1,23,232.517
		Total	5,12,266.904
		Total (Residential Plots)	5,12,266.904
		Total (Commercial Plots)	13,070.096
		Total (Industrial Plots)	5,25,337.000

DETAIL OF INDUSTRIAL PLOTS

Sr.	Block	Part No.	Total Area
1	Block-A	1.10.12 and 1.10.22	256,801.87
2	Block-B	1.10.12 and 1.10.22	23,232.517
3	Block-C	1.10.12 and 1.10.22	1,23,232.517
		Total	5,12,266.904
		Total (Residential Plots)	5,12,266.904
		Total (Commercial Plots)	13,070.096
		Total (Industrial Plots)	5,25,337.000

DETAIL OF INDUSTRIAL PLOTS

Sr.	Block	Part No.	Total Area
1	Block-A	1.10.12 and 1.10.22	256,801.87
2	Block-B	1.10.12 and 1.10.22	23,232.517
3	Block-C	1.10.12 and 1.10.22	1,23,232.517
		Total	5,12,266.904
		Total (Residential Plots)	5,12,266.904
		Total (Commercial Plots)	13,070.096
		Total (Industrial Plots)	5,25,337.000

DETAIL OF INDUSTRIAL PLOTS

Sr.	Block	Part No.	Total Area
1	Block-A	1.10.12 and 1.10.22	256,801.87
2	Block-B	1.10.12 and 1.10.22	23,232.517
3	Block-C	1.10.12 and 1.10.22	1,23,232.517
		Total	5,12,266.904
		Total (Residential Plots)	5,12,266.904
		Total (Commercial Plots)	13,070.096
		Total (Industrial Plots)	5,25,337.000

DETAIL OF INDUSTRIAL PLOTS

Sr.	Block	Part No.	Total Area
1	Block-A	1.10.12 and 1.10.22	256,801.87
2	Block-B	1.10.12 and 1.10.22	23,232.517
3	Block-C	1.10.12 and 1.10.22	1,23,232.517
		Total	5,12,266.904
		Total (Residential Plots)	5,12,266.904
		Total (Commercial Plots)	13,070.096
		Total (Industrial Plots)	5,25,337.000

DETAIL OF INDUSTRIAL PLOTS

Sr.	Block	Part No.	Total Area
1	Block-A	1.10.12 and 1.10.22	256,801.87
2	Block-B	1.10.12 and 1.10.22	23,232.517
3	Block-C	1.10.12 and 1.10.22	1,23,232.517
		Total	5,12,266.904
		Total (Residential Plots)	5,12,266.904
		Total (Commercial Plots)	13,070.096
		Total (Industrial Plots)	5,25,337.000

DETAIL OF INDUSTRIAL PLOTS

Sr.	Block	Part No.	Total Area
1	Block-A	1.10.12 and 1.10.22	256,801.87
2	Block-B	1.10.12 and 1.10.22	23,232.517
3	Block-C	1.10.12 and 1.10.22	1,23,232.517
		Total	5,12,266.904
		Total (Residential Plots)	5,12,266.904
		Total (Commercial Plots)	13,070.096
		Total (Industrial Plots)	5,25,337.000

DETAIL OF INDUSTRIAL PLOTS

Sr.	Block	Part No.	Total Area
1	Block-A	1.10.12 and 1.10.22	256,801.87
2	Block-B	1.10.12 and 1.10.22	23,232.517
3	Block-C	1.10.12 and 1.10.22	1,23,232.517
		Total	5,12,266.904
		Total (Residential Plots)	5,12,266.904
		Total (Commercial Plots)	13,070.096
		Total (Industrial Plots)	5,25,337.000

DETAIL OF INDUSTRIAL PLOTS

Sr.	Block	Part No.	Total Area
1	Block-A		